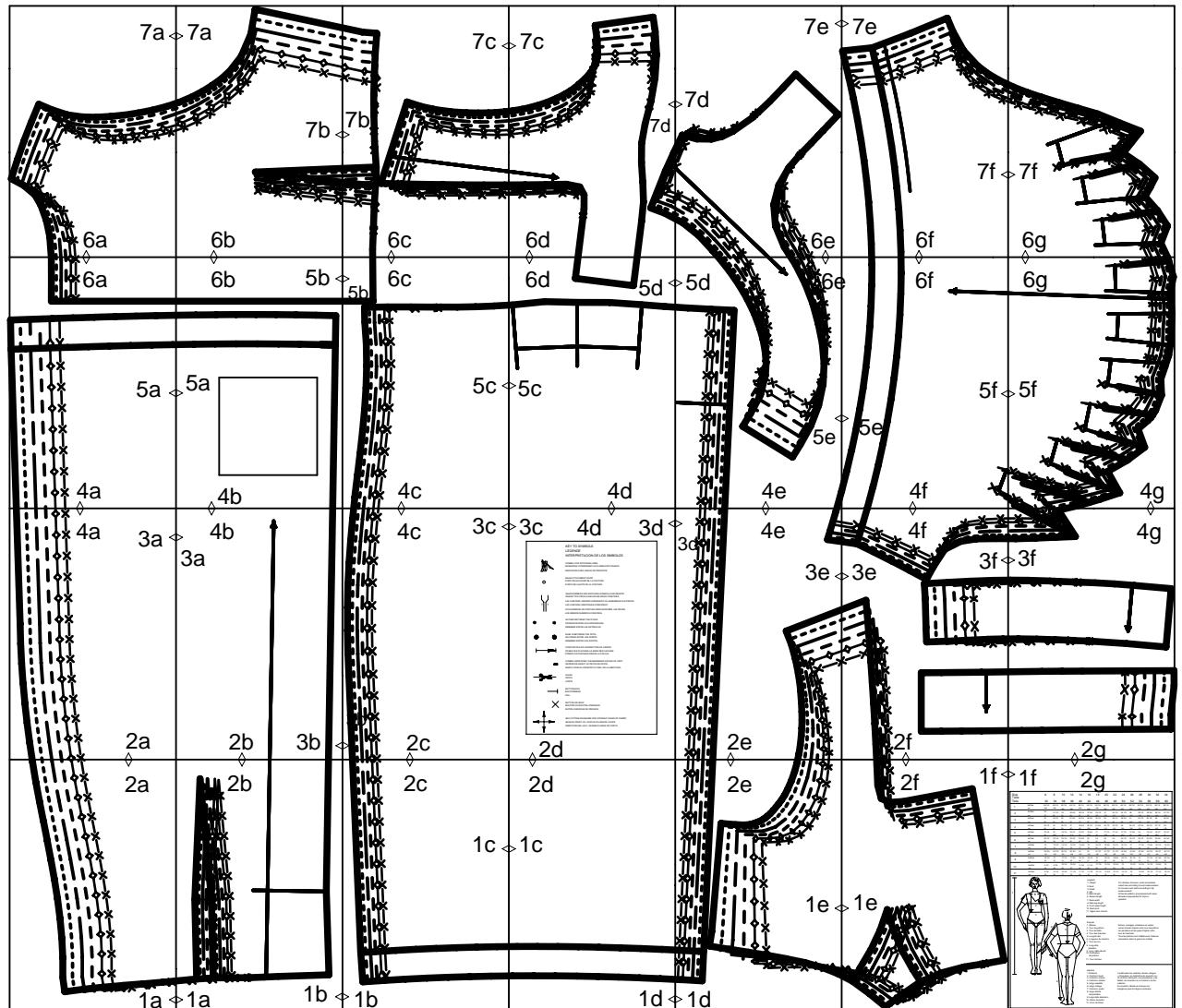


burda Download-Schnitt Mod.6D

aus easy fashion E930

Modell von burdafashion.com

### Übersicht der Druckseiten

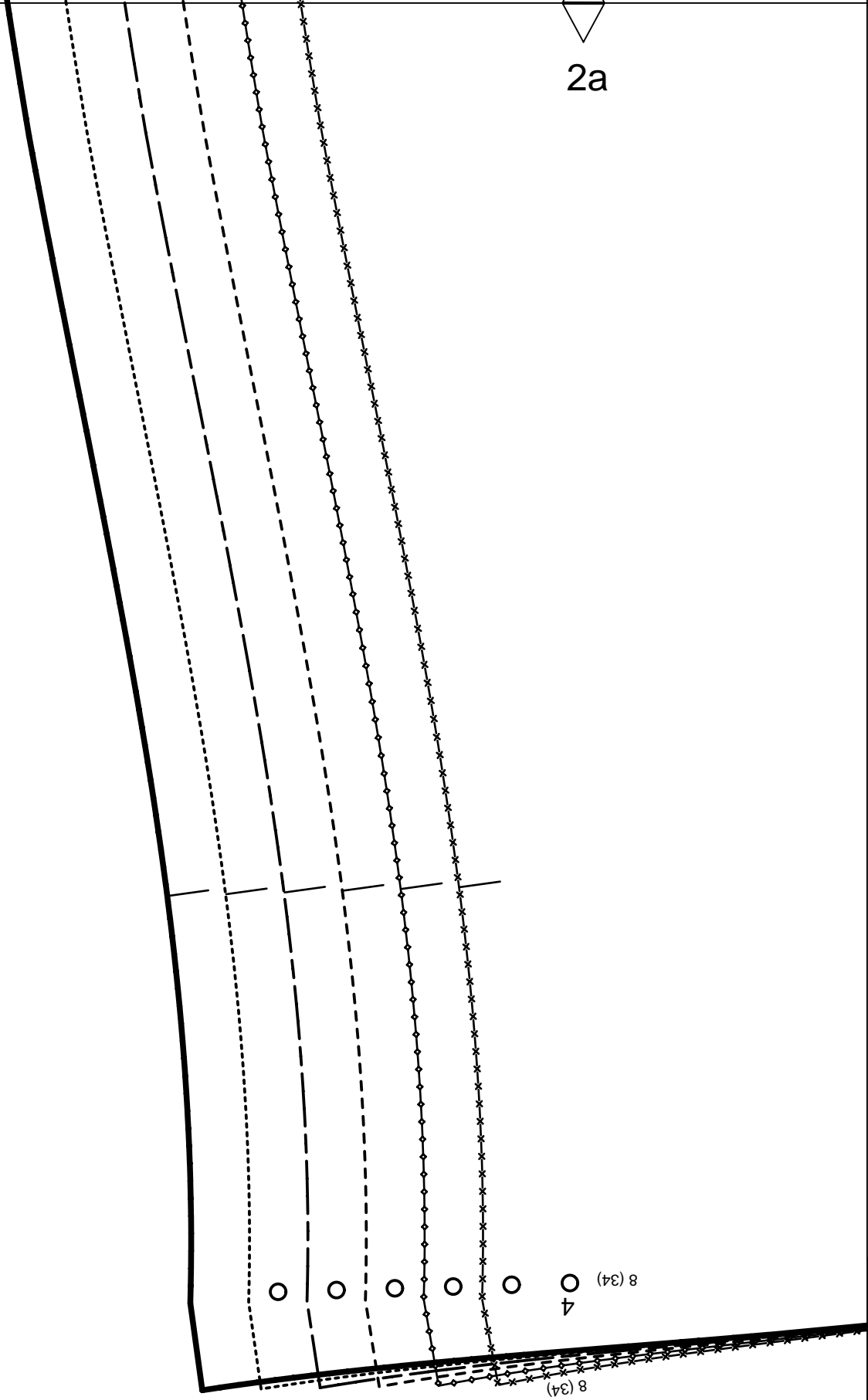


Copyright 2007 by Verlag Aenne Burda GmbH & Co. KG, Am Kestendamm 1, D-77652 Offenburg

Sämtliche Modelle, Schnittteile und Zeichnungen stehen unter Urheberschutz, gewerbliches Nacharbeiten ist untersagt.

Der Verlag haftet nicht für Schäden, die durch unsachgemäße Handhabung des Schnitts, der Materialien, unsachgemäße Ausführung der Tipps und Anleitungen oder unsachgemäße Nutzung der Modelle entstehen.

2a



1a

2b

8 (34)

18 (44)

CENTER BACK ZIPPER  
MILIEU DOS, FERM. A GLISS.  
MEDIO POST. CREMALLERA

CINTURA

TAILLE

WAIST

1a

1b

2c

1c

1 1/4" (3cm)

HEM ALLOWANCE  
VALEUR D'OURLET  
MARGEN DE DOBLADILLO

1b

2d

# 3

FRONT SKIRT PANEL  
DEVANT DE JUPE  
FALDA ANTERIOR



ON THE FOLD  
DANS LA PLIURE DU TISSU  
CON CANTO DOBLADO

$\frac{5}{8}$ "  
(1,5cm)

SEAM ALLOWANCE INCLUDED  
AVEC VALEUR DE COUTURE  
CON MARGEN DE COSTURA

1c

**burda**<sup>®</sup>

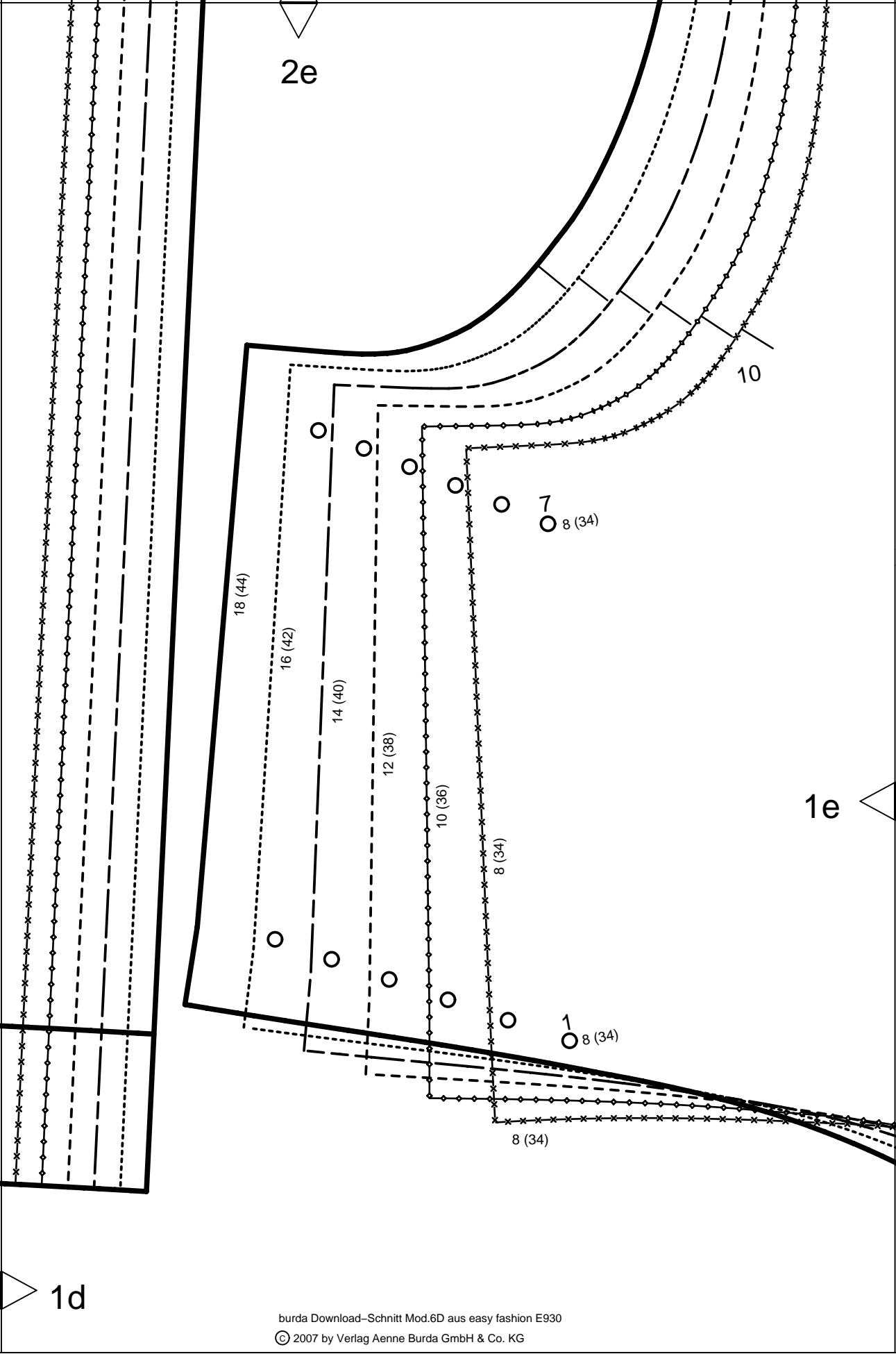
[www.burdafashion.com](http://www.burdafashion.com)

HEM-FOLDLINE

PLIURE DE L'OURLET  
DOBLADILLO-LINEA DE DOBLEZ



1d



2f

1f

1

FRONT  
DEVANT  
DELANTERO

ON THE FOLD  
DANS LA PLIURE DU TISSU  
CON CANTO DOBLADO



1 x

SEAM ALLOWANCE INCLUDED  
AVEC VALEUR DE COUTURE  
CON MARGEN DE COSTURA

5/8"  
(1.5cm)

**burda**<sup>®</sup>

[www.burdafashion.com](http://www.burdafashion.com)

1e

CENTER FRONT FOLD, STRAIGHT GRAIN  
MILIEU DEVANT PLIURE, DROIT FIL  
MEDIO DELANTERO DOBLEZ SENT.HILO

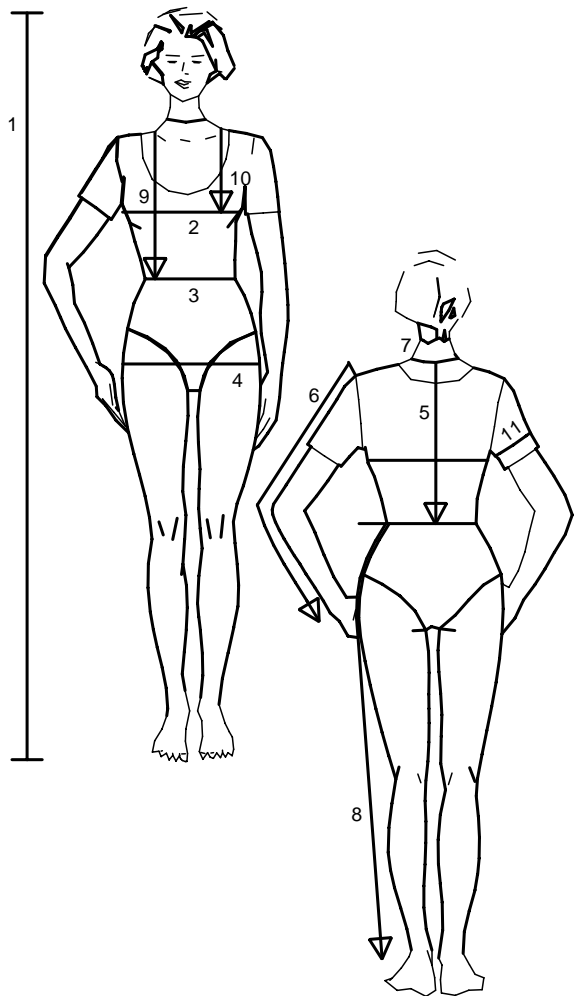
18 (44)

8 (34)

1f

2g

Size		6	8	10	12	14	16	18	20	22	24	26	28	30	32	34
Taille		32	34	36	38	40	42	44	46	48	50	52	54	56	58	60
Talla		32	34	36	38	40	42	44	46	48	50	52	54	56	58	60
1	inches	66 1/4	66 1/4	66 1/4	66 1/4	66 1/4	66 1/4	66 1/4	66 1/4	66 1/4	66 1/4	66 1/4	66 1/4	66 1/4	66 1/4	66 1/4
	cm	168	168	168	168	168	168	168	168	168	168	168	168	168	168	168
2	inches	30	31 1/2	33	34 3/4	36 1/4	37 3/4	39 1/2	41	43 1/2	45 1/2	48	50 1/2	52 3/4	55 1/4	57 1/2
	cm	76	80	84	88	92	96	100	104	110	116	122	128	134	140	146
3	inches	23	24 1/2	26	27 3/4	29 1/4	30 3/4	32 1/2	34	36 1/4	38 3/4	41	43 1/2	45 1/2	48	50 1/2
	cm	58	62	66	70	74	78	82	86	92	98	104	110	116	122	128
4	inches	32 1/2	34	35 1/2	37	38 3/4	40 1/4	41 3/4	43 1/2	45 1/2	48	50 1/2	52 3/4	55 1/4	57 1/2	60
	cm	82	86	90	94	98	102	106	110	115	122	128	134	140	146	152
5	inches	15 3/4	16	16 1/4	16 1/2	16 1/2	16 3/4	17	17 1/4	17 1/4	17 1/2	17 3/4	18	18 1/4	18 1/2	18 1/2
	cm	40	40,5	41	41,5	42	42,5	43	43,5	44	44,5	45	45,5	46	46,5	47
6	inches	23 1/4	23 1/4	23 1/4	23 3/4	23 3/4	24	24	24	24	24 1/2	24 1/2	24 1/2	24 3/4	24 3/4	24 3/4
	cm	59	59	59	60	60	61	61	61	61	62	62	62	63	63	63
7	inches	13	13 1/2	14 1/4	14 1/2	14 3/4	15	15 1/2	15 3/4	16 1/4	16 1/2	17	17 1/4	17 3/4	18 1/4	18 1/2
	cm	33	34	35	36	37	38	39	40	41	42	43	44	45	46	47
8	inches	39 3/4	40 1/4	40 1/4	40 3/4	41	41	41 1/2	41 1/2	41 1/2	41 3/4	41 3/4	41 3/4	42 1/4	42 1/2	42 1/2
	cm	101	102	102	103	104	104	105	105	105	106	106	106	107	108	108
9	inches	16 1/2	17	17 1/4	17 3/4	18 1/4	18 1/2	19	19 1/4	19 3/4	20 1/4	20 1/2	21	21 1/4	21 3/4	22 1/4
	cm	42	43	44	45	46	47	48	49	50	51	52	53	54	55	56
10	inches	9 1/2	9 7/8	10 1/4	10 3/4	11 1/8	11 1/2	11 7/8	12 1/4	12 3/4	13	13 1/2	14 1/4	14 1/2	14 3/4	15
	cm	24	25	26	27	28	29	30	31	32	33	34	35	36	37	38
11	inches	9 7/8	10 1/4	10 3/4	11 1/8	11 1/2	11 7/8	12 1/4	12 3/4	13 1/2	14 1/2	15	15 3/4	16 1/2	17 1/4	18 1/4
	cm	25	26	27	28	29	30	31	32	34	36	38	40	42	44	46



englisch  
 1. Height  
 2. Bust  
 3. Waist  
 4. Hip  
 5. Back length  
 6. Sleeve length  
 7. Neck width  
 8. Side leg length  
 9. Front waist length  
 10. Bust point  
 11. Upper arm circumf.

For dresses, blouses, coats and jackets select size according to bust measurement, for trousers and skirts according to hip measurement!  
 All burda patterns are prepared with ease allowance appropriate for style in question.

français  
 1. Stature  
 2. Tour de poitrine  
 3. Tour de taille  
 4. Tour de hanches  
 5. Long. du dos  
 6. Longueur de manche  
 7. Tour de cou  
 8. Long.côté pantalon  
 9. Long. taille devant  
 10. Profondeur de poitrine  
 11. Tour du bras

Robes, corsages, manteaux et vestes seront choisis d'après votre tour de poitrine les pantalons et les jupes d'après votre tour de hanches!  
 Tous les patrons sont établis avec l'aisance nécessaire selon le genre du modèle.

español  
 1. Estatura  
 2. Contorno busto  
 3. Contorno cintura  
 4. Contorno cadera  
 5. Largo espalda  
 6. Largo manga  
 7. Contorno cuello  
 8. Largo lateral del pantalón  
 9. Largo talle delantero  
 10. Altura de pecho  
 11. Cont. de brazo

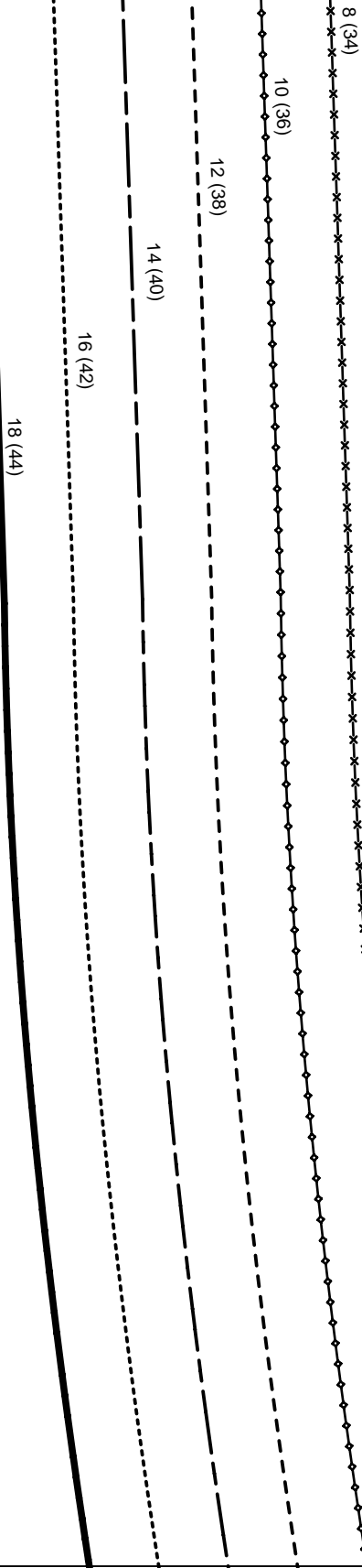
La talla para los vestidos, blusas, abrigos y chaquetas, se determina de acuerdo con el contorno del busto. Los pantalones y las faldas, de acuerdo con el contorno de las caderas.  
 En el patrón-Burda se incluyen los márgenes para la holgura necesaria.



4a

3a

2a



4b

3a

STRAIGHT GRAIN  
DROIT FIL  
SENTIDO HILO

www.burdaefashion.com



SEAM ALLOWANCE INCLUDED  
AVEC VALEUR DE COUTURE  
CON MARGEN DE COSTURA

5/8" (1.5cm)



BACK SKIRT PANEL  
DOS DE JUPE  
FALDA POST.

6

SEAM  
COUTURE  
COSTURA

2b

3b

3b

18 (44)  
16 (42)  
14 (40)  
12 (38)  
10 (36)  
8 (34)

4c

3c

2c

KEY TO SYMBOLS  
LEGENDE  
INTERPRETACION DE LOS SIMBOLOS



SYMBOL FOR STITCHING LINES  
REMARQUE CONCERNANT LES LIGNES DE PIQURES  
INDICACION PARA LINEAS DE PESPUNTE



SEAM ATTACHMENT POINT  
POINT DE RACCORD DE LA COUTURE  
PUNTO DE AJUSTE DE LA COSTURA



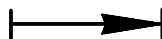
SEAM NUMBERS ARE MATCHING SYMBOLS AND DENOTE  
WHERE TWO PIECES SHOULD BE SEWN TOGETHER.  
LES CHIFFRES-REPERES INDIQUENT OU ASSEMBLER LES PIECES.  
LES CHIFFRES IDENTIQUES COINCIDENT.  
LOS NUMEROS DE COSTURA INDICAN DONDE LAS PIEZAS.  
LOS MISMOS NUMEROS COINCIDEN.



GATHER BETWEEN THE STARS.  
FRONCER ENTRE LES ASTERISQUES.  
EMBEBER ENTRE LAS ESTRELLAS.



EASE IN BETWEEN THE DOTS.  
SOUTENIR ENTRE LES POINTS.  
EMBEBER ENTRE LOS PUNTOS.



POSITION PLEATS IN DIRECTION OF ARROW.  
POSER LES PLIS DANS LE SENS DES FLECHES.  
PONER LOS PLIEQUES SEGUN LA FLECHA.



SYMBOL INDICATING THE BEGINNING OR END OF VENT.  
REPERE DE DEBUT OU DE FIN DE FENTE.  
MARCA PARA EL PRINCIPIO O FINAL DE LA ABERTURA.



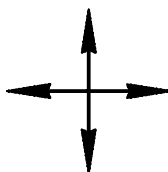
SLASH  
FENTE  
CORTE



BUTTONHOLE  
BOUTONNIERE  
OIAL



BUTTON OR SNAP  
BOUTON OU BOUTON-PRESSION  
BOTON O BROCHE DE PRESION



SEE CUTTING DIAGRAMS FOR STRAIGHT GRAIN OF FABRIC  
SENS DU DROIT-FIL VOIR LES PLANS DE COUPE  
DIRECCION DEL HILO, VEANSE PLANOS DE CORTE

3d

4e

3e

8 (34)  
10 (36)  
12 (38)  
14 (40)  
16 (42)  
18 (44)

18 (44)

16 (42)

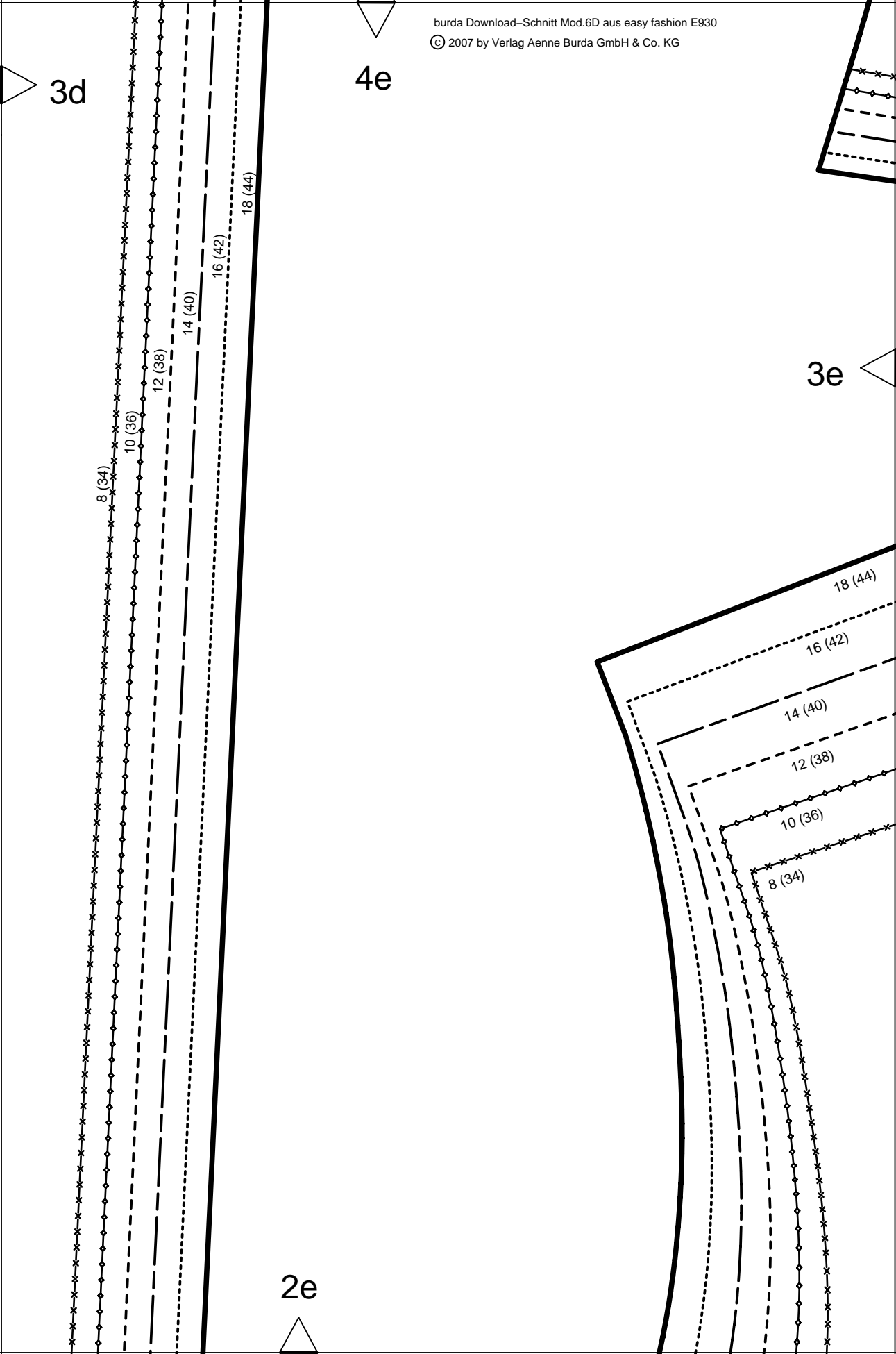
14 (40)

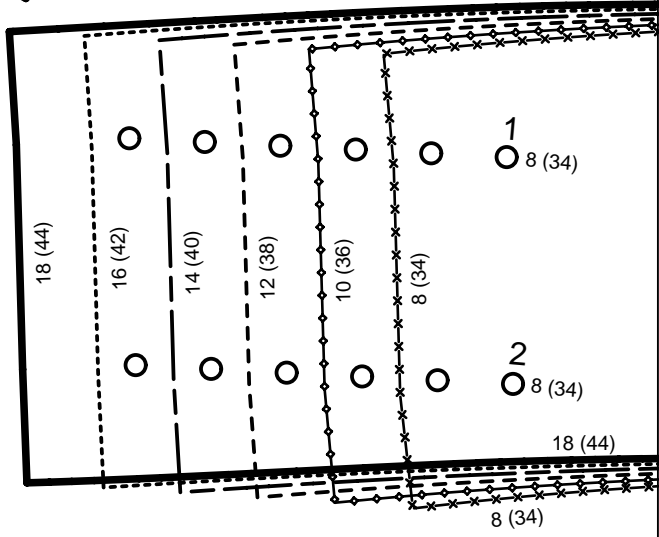
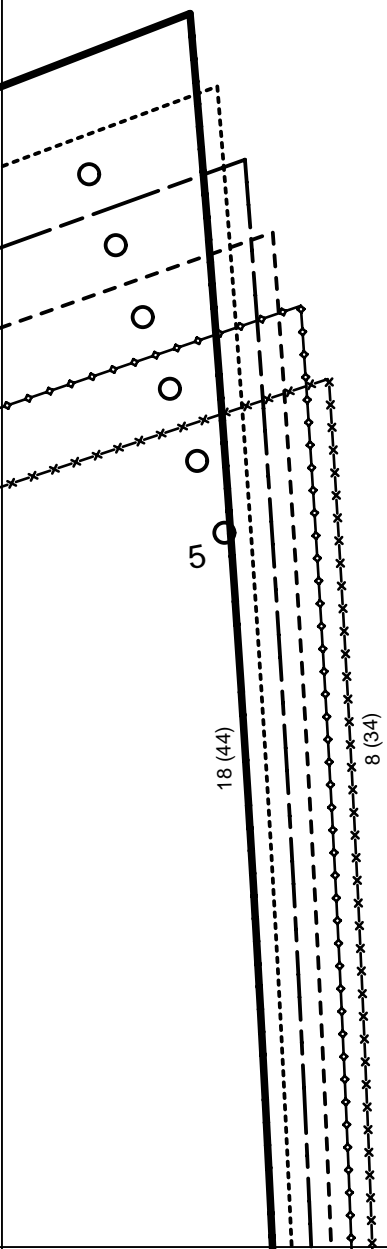
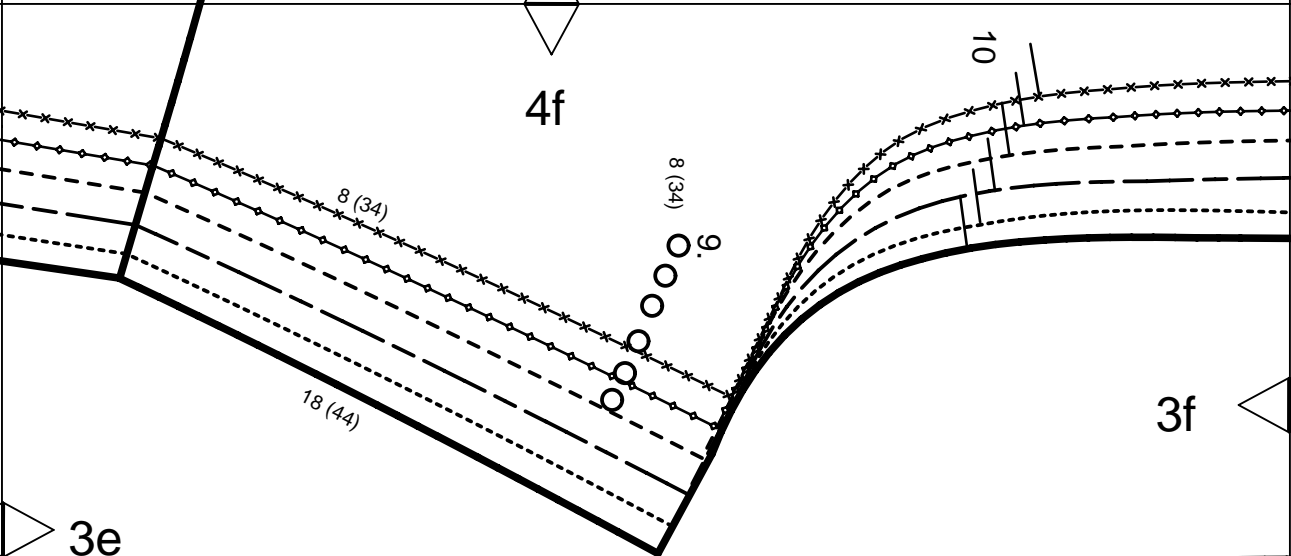
12 (38)

10 (36)

8 (34)

2e





CENTER BACK ZIPPER  
 MILLIEU DOS, FERM. A GLISS.  
 MEDIO POST. CREMALLERA

TOP  
 EN HAUT  
 ARRIBA

STRAIGHT GRAIN  
 DROIT FIL  
 SENTIDO HILO

**burda**<sup>®</sup>  
 www.burdafashion.com

4g

3f

**burda**<sup>®</sup>

www.burdafashion.com

**2**

FRONT BAND  
PAREMENT/PATTE DEVANT  
CENEFA ANTERIOR



1 x

ON THE FOLD  
DANS LA PLIURE DU TISSU  
CON CANTO DOBLADO

5/8"

(1,5cm)

SEAM ALLOWANCE INCLUDED  
AVEC VALEUR DE COUTURE  
CON MARGEN DE COSTURA

TOP  
EN HAUT  
ARRIBA

STRAIGHT GRAIN  
DROIT FIL  
SENTIDO HILO

CENTER FRONT  
MILIEU DEVANT  
CENTRO DELANTERO  
FABRIC FOLD  
PLIURE DU TISSU  
CANTO DE DOBLEZ

**5**

BACK BAND  
PAREMENT DOS  
CENEFA POST.

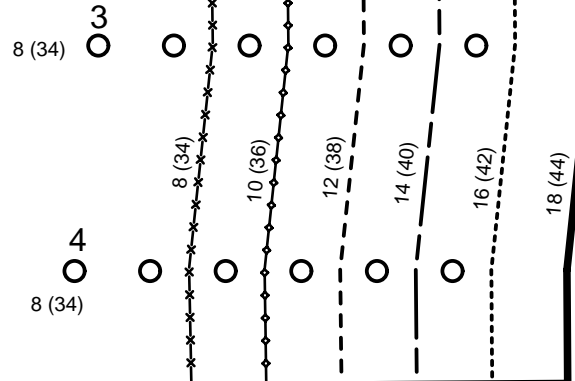


2 x

SEAM ALLOWANCE INCLUDED  
AVEC VALEUR DE COUTURE  
CON MARGEN DE COSTURA

5/8"

(1,5cm)



2g

6a

HEM ALLOWANCE  
1 <sup>1</sup>/<sub>4</sub>" (3cm)  
VALEUR D'OURLET  
MARGEN DE DOBLADILLO

5a

4a



6b

5b

CENTER BACK ZIPPER STRAIGHT GRAIN  
MILIEU DOS, FERM. A GLISS, DROIT-FIL  
MEDIO POST. CREMALLERA, DIRECCION HILO



PIURE DE L'OURLET  
DOBLADILLO-LINEA DE DOBLEZ

HEM-FOLDLINE

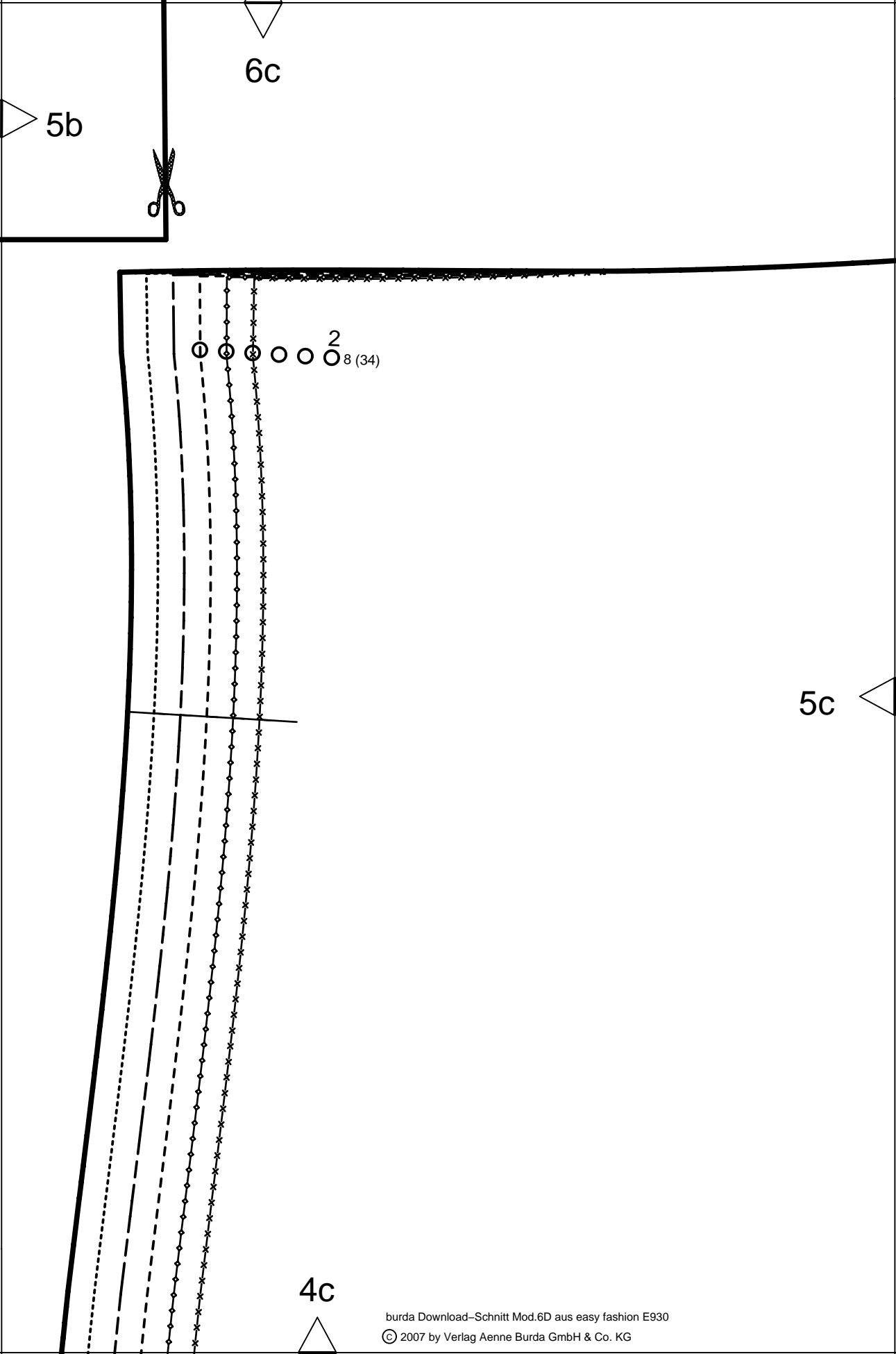
5a

test square

side length

4 inches (10 cm)

4b



5b

6c



① ② ③ ○ ○ 2  
8 (34)

5c

4c

6d

CENTER FRONT FOLD  
PLIURE DU TISSU MILIEU DEVANT  
MEDIO DELANTERO, DOBLEZ

5d

PLEAT  
PLI  
PLIEGUE

PLEAT  
PLI  
PLIEGUE

5c

4d

5d

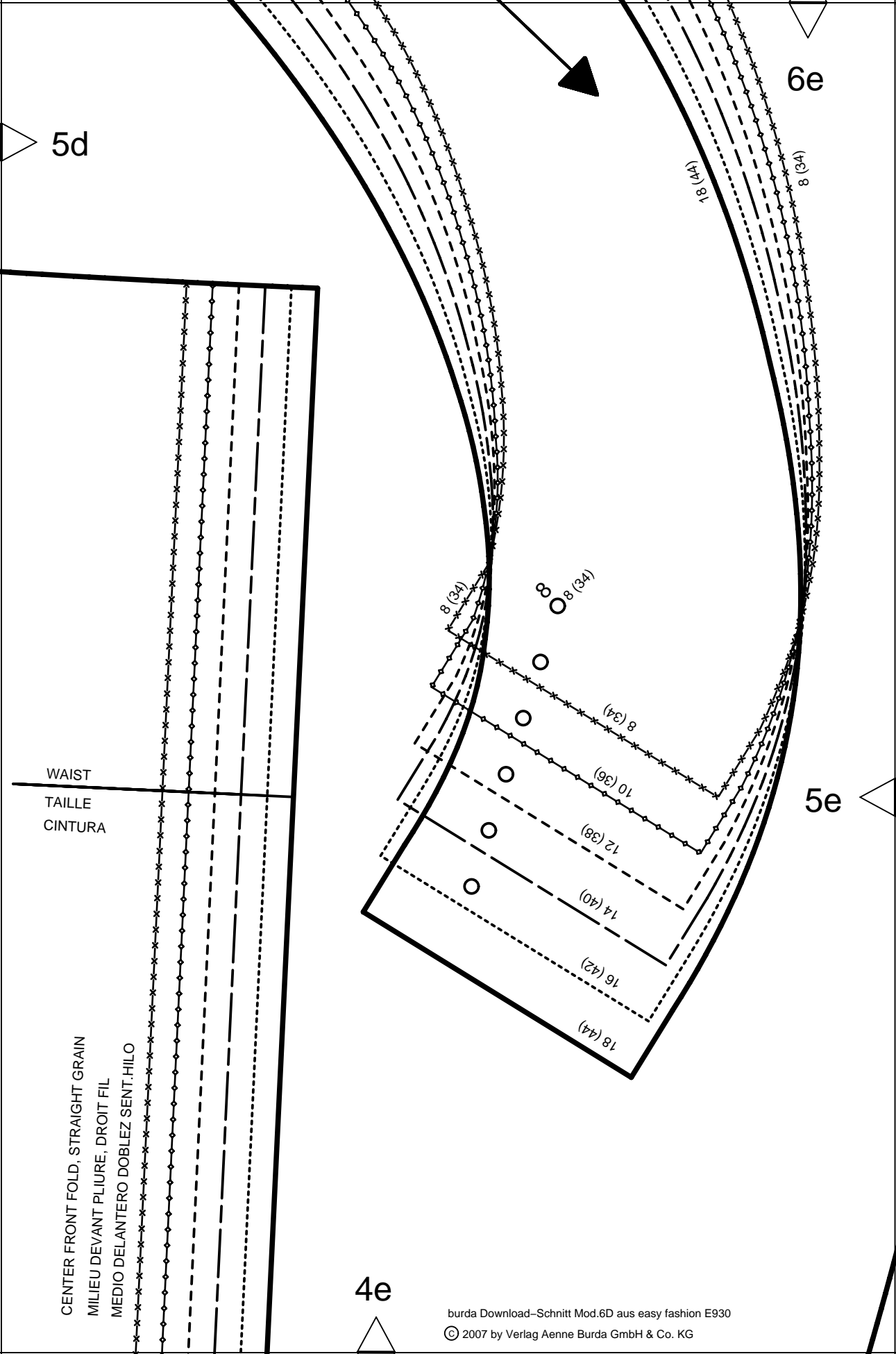
6e

WAIST  
TAILLE  
CINTURA

CENTER FRONT FOLD, STRAIGHT GRAIN  
MILIEU DEVANT PLIURE, DROIT FIL  
MEDIO DELANTERO DOBLEZ SENT.HILO

4e

5e



STRAIGHT GRAIN  
DROIT FIL  
SENTIDO HILO

6f

HEM-FOLDLINE  
PLIURE DE L'OURLET  
DOBLADILLO-LINEA DE DOBLEZ



5f

7

SLEEVE  
MANCHE  
MANGA



SEAM ALLOWANCE INCLUDED  
AVEC VALEUR DE COUTURE  
CON MARGEN DE COSTURA

5/8" (1.5cm)

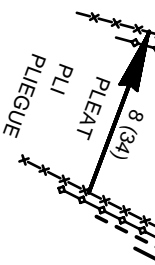
burda®  
www.burdaformat.com

4f

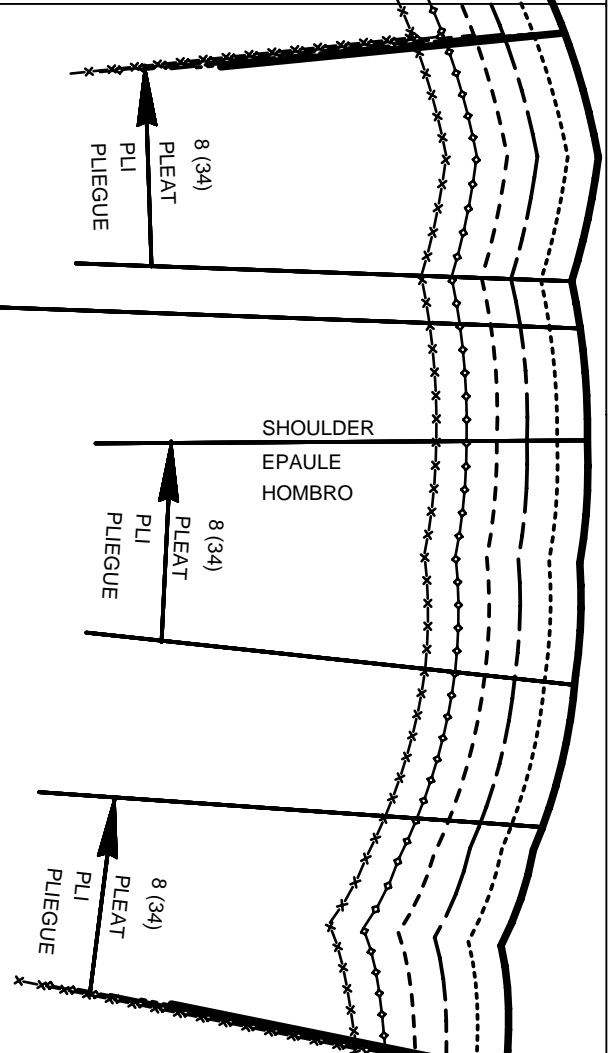
HEM ALLOWANCE  
VALEUR D'OURLET  
MARGEN DE DOBLADILLO

1 1/4" (3cm)

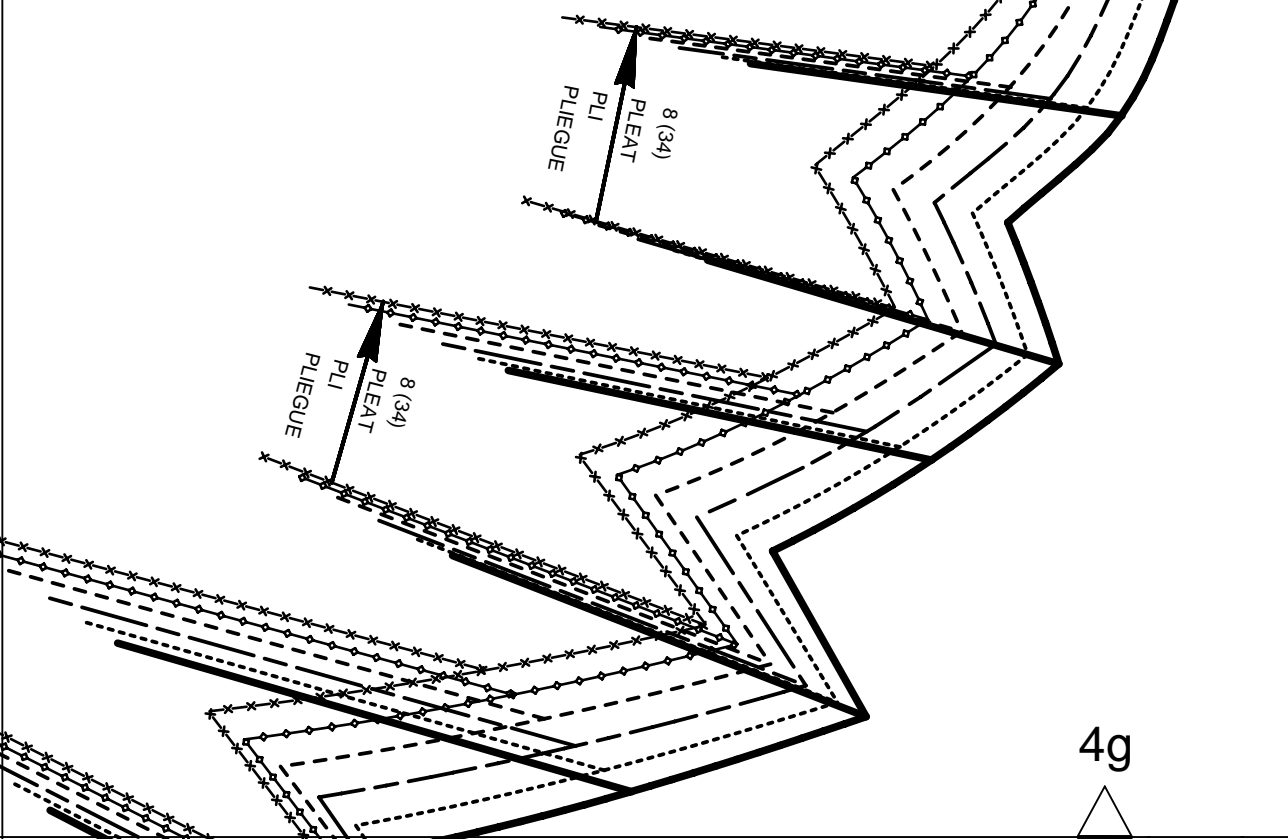
5e



6g

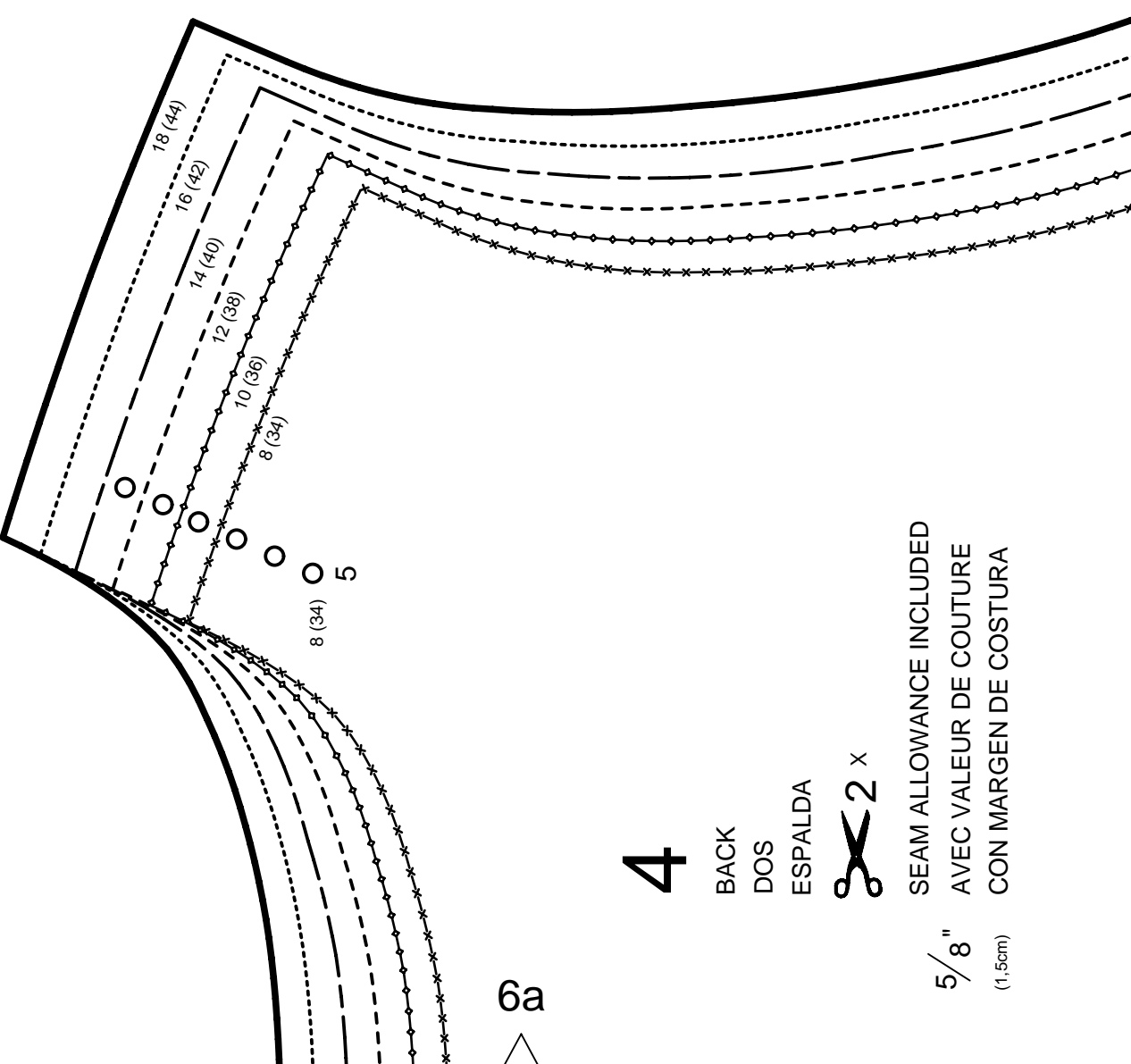


5f



4g

7a



4

BACK  
DOS  
ESPALDA

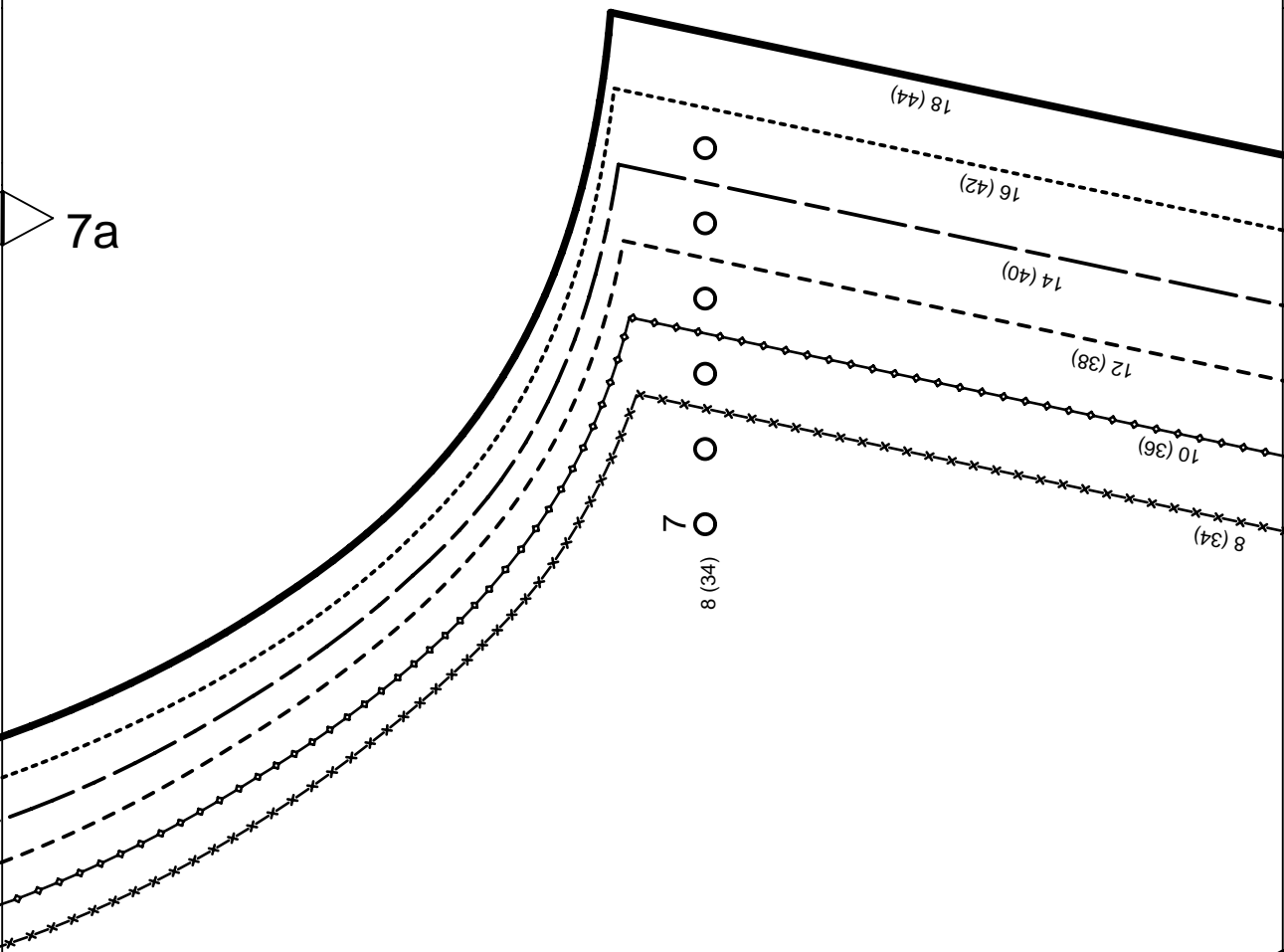


SEAM ALLOWANCE INCLUDED  
AVEC VALEUR DE COUTURE  
CON MARGEN DE COSTURA

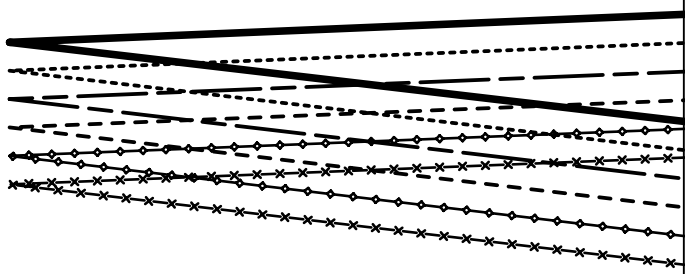
5/8" (1,5cm)

6a

7a



7b

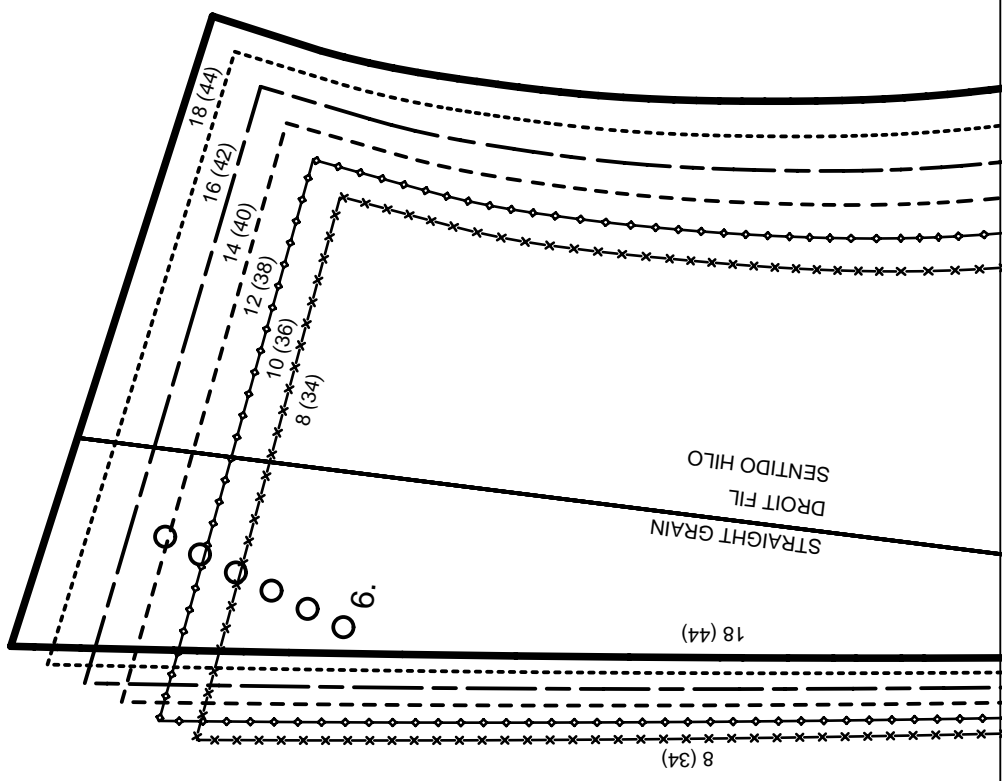
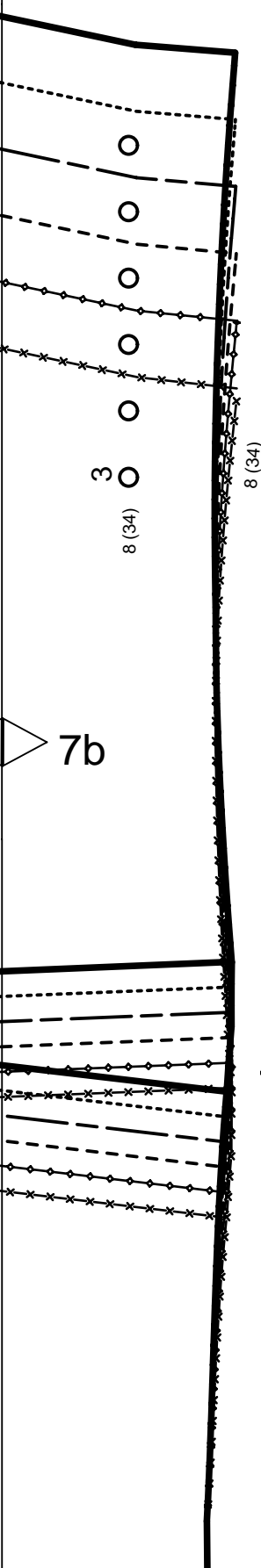


**burda**<sup>®</sup>  
www.burdafashion.com

6b



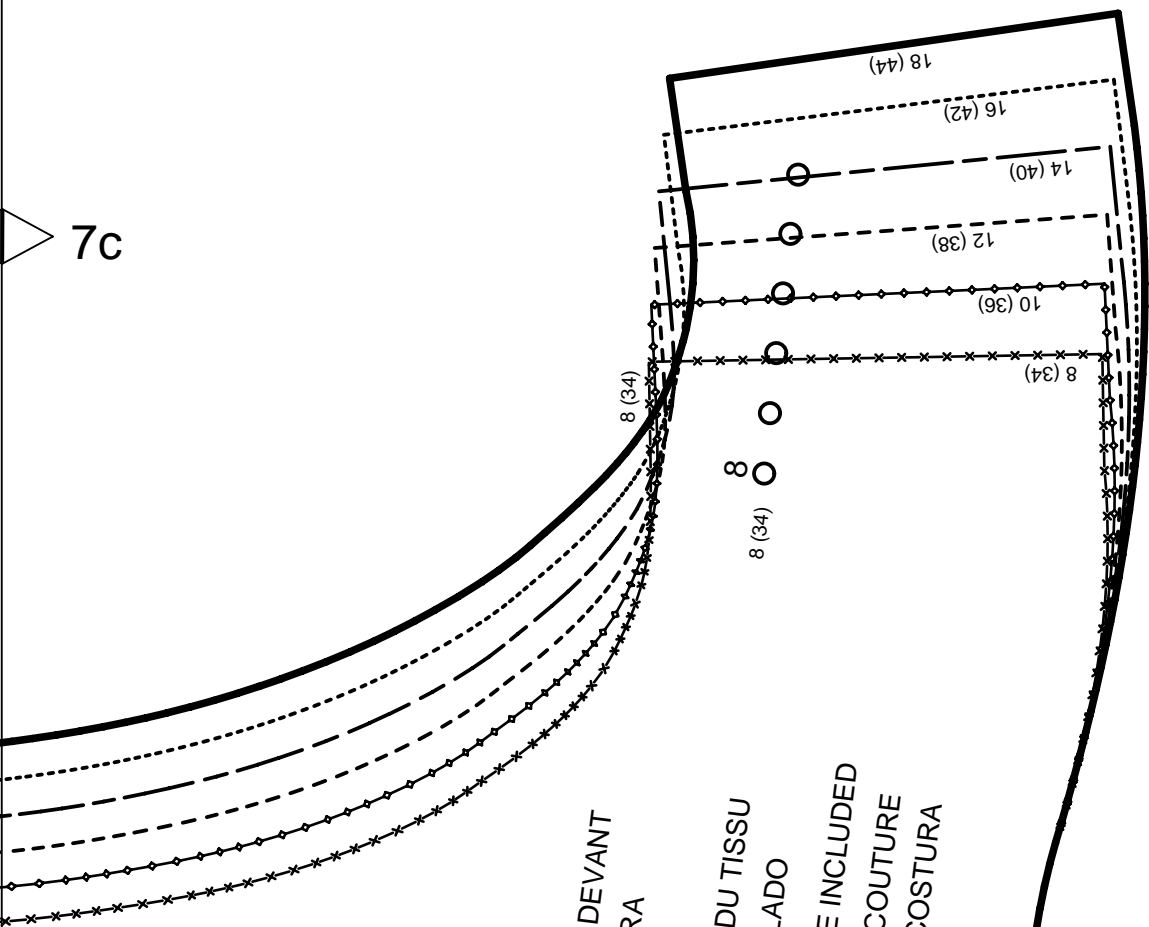




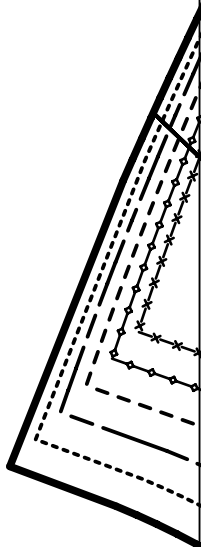
6c



7c



7d



8

FRONT FACING  
PAREMENTURE DEVANT  
VISTA DELANTERA

ON THE FOLD



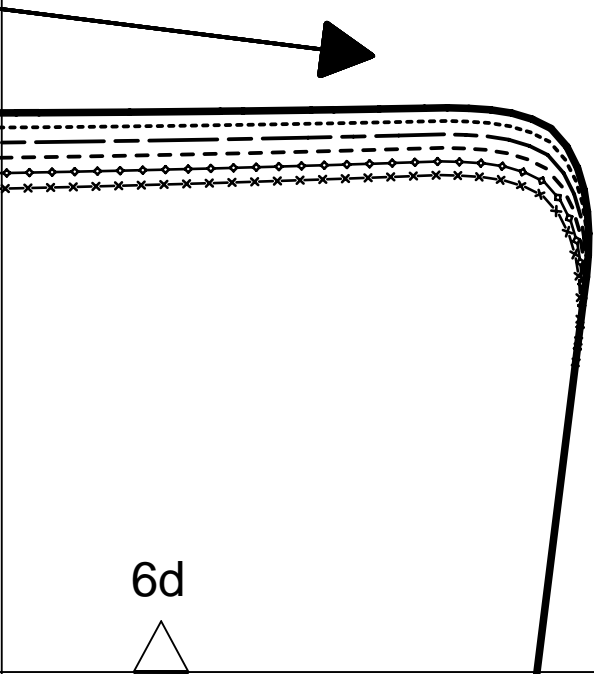
1 x

DANS LA PLIURE DU TISSU  
CON CANTO DOBLADO

SEAM ALLOWANCE INCLUDED  
AVEC VALEUR DE COUTURE  
CON MARGEN DE COSTURA

5/8" (1.5cm)

**burda**  
www.burdatafashion.com



6d



7e

# burda®

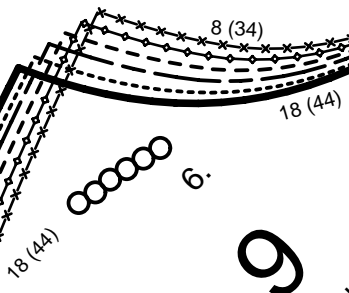
www.burdafashion.com

# burda®

www.burdafashion.com

CENTER BACK  
MILIEU DOS  
CENTRO POST.

7d



# 9

BACK FACING  
PAREMENTURE DOS  
VISTA POST.



5/8" (1.5cm)

SEAM ALLOWANCE INCLUDED  
AVEC VALEUR DE COUTURE  
CON MARGEN DE COSTURA

STRAIGHT GRAIN  
DROIT FIL  
SENTIDO HILLO

6e

7e

